

## OPTIMUS NOVA+ - the new king of multifuel expedition stoves

### PRODUCT CHARACTERISTICS

Fuel:	White gas, paraffin, diesel, jet fuel, unleaded petrol
Ø Burning time:	Up to 2.5 h at full output (with 450 ml fuel)
Ø Cooking time:	For 1 l water approx. 3,5 minutes
Output:	Watt: 2850 BTU: 9725
Weight:	430 g
Dimensions:	125 x 80 x Ø 65 mm
Guarantee:	2 years
Material:	Stainless steel, brass, aluminum
Accessories:	Pump, wind shield, multitool, stuff bag, spare parts and lubricant
Article No.:	8016277 Optimus Nova+ 8017632 Optimus Nova spare parts set 8016305 Optimus Nova spare parts set light

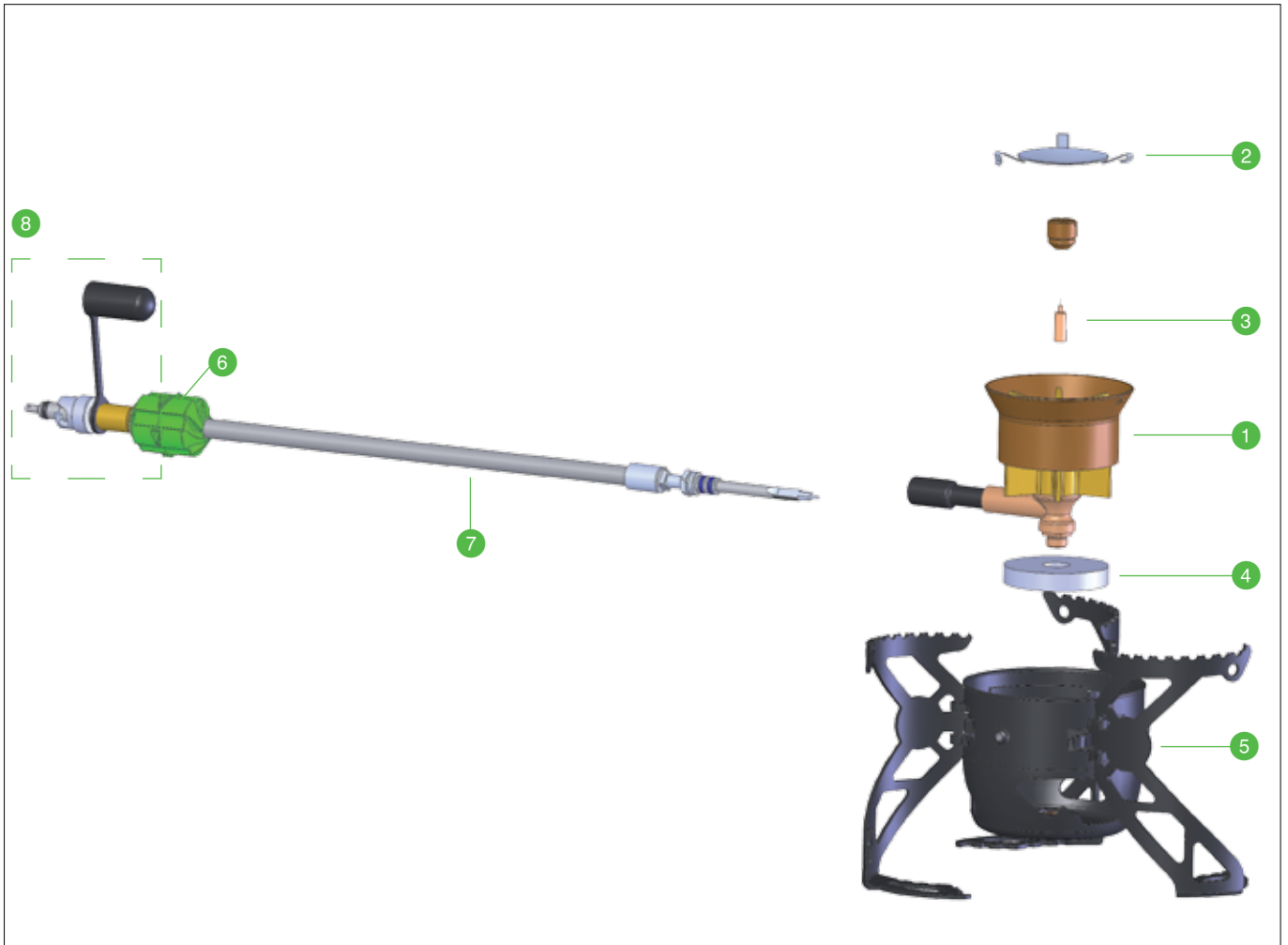


### PRODUCT CHARACTERISTICS > BENEFITS

- Multi-fuel expedition stove with Optimus Powerline™ for safe and precise flame control
- Integrated MAGIC™ cleaning needle for quick and easy cleaning of the jet – even during cooking
- Durable aluminum pump and quick-action connections for more safety and convenience
- Self purging FLIPSTOP™ pump clears the burner of fuel and depressurizes the fuel bottle
- Patented quick priming burner requires less preheating and saves fuel
- Burns all types of fuel - using same burner jet
- Wind shield for increased performance
- Thanks to the collapsible turbine shaped pot support and a folding flame control the pack size is minimal
- Despite the small format Optimus Nova+ offers stability for large sized pots

## OPTIMUS NOVA+ - the new king of multifuel expedition stoves

### EXPLODED VIEW



- 1 Burner
- 2 Burner plate
- 3 Cleaning needle
- 4 Priming wick
- 5 Burner housing
- 6 Control handle
- 7 Fuel hose
- 8 Quick coupling with dust protection cap

Katadyn reserves the right to modify product characteristics

**Katadyn Products Inc.** | Pfäffikerstrasse 37 | 8310 Kemptthal | Switzerland  
Tel: +41 44 839 21 11 Fax: +41 44 830 79 42  
info@katadyn.ch | [www.optimusstoves.com](http://www.optimusstoves.com)